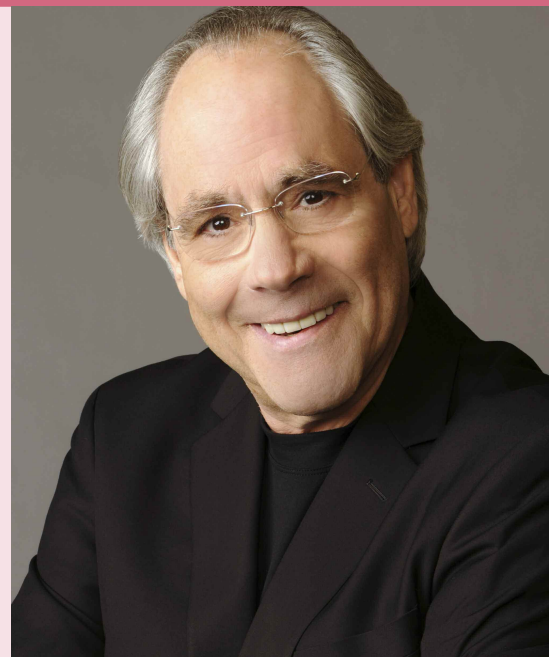




Join us for a great evening  
Saturday, May 4, 2013  
at 7:30 pm.

*It's not too late!!*

Visit [nykolami.org](http://nykolami.org) or call  
the office to make reservations.



*Please Join Us As We Celebrate The Confirmation Of*

Jack Brown  
Caroline Cole  
Ariel Coonin  
Ethan Cutler  
Zach Falk  
Jared Fischer

Jordan Frankenthaler  
Jennifer Gordon  
Allison Jasne  
Jack Kantor  
Zachary Klein  
Rachel Norman  
Catherine Reynolds

Alex Root  
David Scharf  
Zoe Shannon  
Barak Stockler  
Ross VanDoren  
Jake Zieman

*at Shavuot Services, Tuesday, May 14, 2013, at 7:00 in the evening  
Dessert reception following the service.*

## SERVICES

Friday, May 3

5:30 pm

SHABBAT IN THE WOODS in Gallery

6:15 pm

SHABBAT EVENING SERVICE in  
Sanctuary honoring Rabbinic Intern Rachel  
Maimin

Saturday, May 4

SPIRITUAL LIFT in Chapel

9:00 am

Coffee and community

9:30 am

Study

11:00 am

SERVICE

10:30 am

SHABBAT MORNING SERVICE:

Bat Mitzvah of Max Karl in Sanctuary

5:30 pm

SHABBAT AFTERNOON SERVICE:

Bat Mitzvah of Eric Kopczynski in Sanctuary

Friday, May 10

5:30 pm

SHABBAT IN THE WOODS in Gallery

6:15 pm

SHABBAT EVENING SERVICE in  
Sanctuary

Saturday, May 11

SPIRITUAL LIFT in Chapel

9:00 am

Coffee and community

9:30 am

Study

11:00 am

SERVICE

5:30 pm

SHABBAT AFTERNOON SERVICE:

Bat Mitzvah of Sydney Barest in Sanctuary

Tuesday, May 14

EREV SHAVUOT/CONFIRMATION

7:00 pm

CONFIRMATION SERVICE in Sanctuary

Wednesday, May 15

9:00 am

SHAVUOT &amp; YIZKOR SERVICES in Chapel

Friday, May 17

5:30 pm

SHABBAT IN THE WOODS in Gallery

6:15 pm

SHABBAT EVENING SERVICE in  
Sanctuary

Saturday, May 18

SPIRITUAL LIFT in Chapel

9:00 am

Coffee and community

9:30 am

Study

11:00 am

SERVICE

10:30 am

SHABBAT MORNING SERVICE:

Bat Mitzvah of Emily & Madeline Brew in  
Sanctuary

5:30 pm

SHABBAT AFTERNOON SERVICE:

Bat Mitzvah of Audrey Shaev in Sanctuary

Friday, May 24

5:30 pm

SHABBAT IN THE WOODS in Gallery

6:15 pm

SHABBAT EVENING SERVICE in  
Sanctuary

Saturday, May 25

SPIRITUAL LIFT in Chapel

9:00 am

Coffee and community

9:30 am

Study

11:00 am

SERVICE

5:30 pm

SHABBAT AFTERNOON SERVICE:

Bat Mitzvah of Emma Zieman in Sanctuary

Friday, May 31

5:30 pm

SHABBAT IN THE WOODS in Gallery

6:15 pm

SHABBAT EVENING SERVICE in  
Sanctuary

Saturday, June 1

SPIRITUAL LIFT in Chapel

9:00 am

Coffee and community

9:30 am

Study

11:00 am

SERVICE

10:30 am

SHABBAT MORNING SERVICE: Bat  
Mitzvah of Samantha Weiner in Sanctuary

## Reminder:

Please join us on Tuesday, May 7th for a cocktail reception  
in honor of Mark Seiden & Ronnie Cohn Farley to thank  
them for their dedication and leadership as their  
terms as Co-Presidents of Kol Ami end.

6:30-7:30 pm: Reception • 7:30-8:00 pm: Program

8:00 pm: Annual Meeting

## Kol Ami's Inclusion Committee

This committee is here to assist any member or visitor with  
concerns about accessibility, a specific disability or inclusion  
in our activities. Please contact any one of us to hear your  
concerns or suggestions.

Gene Kava, [esqesk@aol.com](mailto:esqesk@aol.com)

Donna Klein, [dklein@donnakleinassociates.com](mailto:dklein@donnakleinassociates.com)

or Rachel Feld-Glazman, [rfeldglazman@gmail.com](mailto:rfeldglazman@gmail.com)

## Weekly Torah Portions for May

## Week ending May 4, 2013

**Parashat B'har/B'chukotai Leviticus 25:1-27:34**

This double *parashah* presents a vision of a society guided by God-given  
principles of human freedom, human dignity and concern for the most vul-  
nerable in society. It includes laws regulating the sabbatical year and the  
jubilee year. The book of Leviticus is completed this week with B'chukotai,  
which is filled with God's promises and warnings to the people depending  
upon whether or not they faithfully follow or disobey God's command-  
ments.

## Week ending May 11, 2013

**Parashat B'midbar Numbers 1:1- 4:20**

This Shabbat we begin reading the book of B'midbar, (in the wilderness).  
The book is called "Numbers" in English because it begins with a census of  
all male Israelites in the camp who are eligible to bear arms, as well as those  
responsible for the duties in the Tabernacle.

## Week ending May 18, 2013

**Parashat Naso Numbers 4:21-7:89**

The second portion in the Book of Numbers completes the census with a  
counting of the Levitical families and the enumeration of their responsibili-  
ties in the portage of the Tabernacle and the Tent of Meeting. The  
*parashah's* concluding section begins with the Priestly Blessing, and ends  
with a list of the offerings brought by the tribal heads for the ceremony of  
the dedication of the Tabernacle.

## Week ending May 25, 2013

**Parashat B'haalot'cha Numbers 8:1-12:16**

In this *parashah* God instructs Moses to appoint elders to share the burden  
of ruling the people and settling their many issues. The *parashah* concludes  
with Aaron and Miriam saying disparaging things about their younger broth-  
er Moses. As a result, Miriam is struck with a skin disease, manifested as  
white, itchy scales. Aaron appeals to Moses, who offers a prayer to God on  
his sister's behalf.

# Counting the Days

There are so many reasons that we count days:

- Remember to take this pill every other day.
- How much longer will it be till spring finally gets here?
- How many more school days until the end of the year?
- How long has it been since the loss of my friend?

In the Jewish calendar, there is a period of time set aside just to count the days. As silly as that might sound, it's both interesting (intellectually) and challenging (spiritually). From an intellectual perspective, we connect the 49 days between Passover and Shavuot - reminding ourselves that our freedom wasn't the culmination of our story (Yay!—it's over). Rather it's the beginning. Now that we are free, we need to make something of our lives. And so the Exodus leads to Mt.

Sinai—and the story of our first encounter with Torah.

From a spiritual perspective, we try to remember to count these 49 days - just one moment to notice and bless the day. It's no simple task. I have not yet remembered - in all my attempts—to notice, count and bless the day for 49 consecutive days—ever. This year, I'm better. Today is the 22nd day of the Omer—and I have remembered each of these 22 days. I'm hoping that I'm getting better at gratitude - and that that's the reason I'm remembering to notice and bless these days.

So it was perfect that I happened to find a note that I wrote several years ago—which accompanied publicity about the annual Kol Ami Retreat. Here's the note:

*When this weekend of the temple retreat ends, and you go back home, you will find*

*yourself counting the days until the next one! We would truly love to have you join us for what is the most amazing, fun, warm and beautiful experience of community. Hoping to spend this unforgettable week-end with you, Shira*



Everything I wrote years ago is true! Don't miss it. It is truly incredible. From campfires and Havdalah—to family and kid time—adult time—do nothing but sit by the lake time—learn, dance, drink, bike, tennis, talk, connect. Memorial Day Weekend - May 24th -26th, 2013. You'll find it on our home page at [www.nykolami.org](http://www.nykolami.org).

Really hoping to spend it with you,

Shira

**Visit Berlin and Krakow with Rabbi Shira September 29-October 8. Learn more [http://www.arzaworld.com/Flipbook/Congregation\\_kol\\_ami\\_white\\_plains/#/1/](http://www.arzaworld.com/Flipbook/Congregation_kol_ami_white_plains/#/1/)**

## No Longer a Stranger



Our Torah teaches us, “The strangers who reside with you shall be to you as citizens; you shall love each one as yourself, for you were

strangers in the Land of Egypt” [Lev. 19:33-34]. I remember arriving at Kol Ami for the first time on a beautiful, sunny day nearly two years ago. I was that stranger. It could have been a very lonely place, a scary place. But you opened your doors and your hearts to me. We have shared meals together, learned together, laughed together, prayed together. You have welcomed me into your community. You have invited me to be a member of this community. The stranger shall be to you as a citizen.

We read these words of Torah together year

after year, affirming our identity, our Jewish communal story. So too have you shared your Torah, your stories, with me. We have shared the memories of our families, the challenges and joys we are experiencing today, the stories that make us who we are. I will remember your stories.

We study these words of Torah together and learn something new each time we read them. Every week, you share your love of learning, your love of our Jewish story. We have learned together on Sunday mornings and Wednesday afternoons at religious school, on Friday nights at got shabbat?, and on Saturday mornings at the Lift. Every time we join together to study, I learn with you; I learn from you. I will remember our time learning together.

We are a people of learning, of text, of stories. And we are also a people of music, of

song, of dance. So often do we gather together, raising our voices as one in prayer, singing a new song to God. I have learned new music from you, and you welcomed me to bring a new song, to share my love for Jewish music with you. It has been a gift to create beautiful, uplifting, soulful sounds with all of you. I will remember your voices.

We are commanded to love the stranger, for we know what it means to be a stranger. And in doing so, we can allow others to know what it means to move from stranger to cherished one. You have given me this gift, welcomed me with open arms into your community, into your world, and this I will never forget.

*With deep gratitude,  
Rachel*

## From the Religious School Principal

It's hard to believe how quickly this year has flown by. As the end of our school year approaches, there's still much to do and lots going on. Please keep checking The Gold Standard and our website for updates. If you haven't yet, friend us on facebook at Congregation Kol Ami! With lots of end of year activities and programs, we don't want you to miss a thing.

Our annual Zimriyah (Song Festival) will take place on Sunday, May 19th. Everyone is invited to join us as we mark the end of another year with songs and dances. This is a wonderful opportunity for all of us to join together and celebrate a year filled with joy and learning. Look for details soon!

Registration for next year has begun! We are using on-line registration again. You only need to complete the online registration form if you have a NEW student entering

our school, if your child is entering grades 8-12 or if any of your information has changed. Students currently enrolled in grades K-6 will automatically be rolled over in our data base. To confirm your child's registration for next year, all you need to do is pay your tuition or arrange an updated payment plan. If you have any questions, please call us!

Don't miss the chance to participate in our Annual Retreat! You can register on line or pick up a form outside the main office. We're thrilled to be returning to Circle Lodge. Come for the weekend, or just for a day. It's a wonderful way to connect to the very best Kol Ami has to offer. Get details on the website, and sign up to join us. We hope to see everyone here!

Our new Community Garden is actually taking shape. We're building and preparing and

planting. Please stop by to check it out... or join us! There is much work to be done and we need help! Over the summer we'll be posting a family gardening sign up. Sign up for a week and tend the garden!



Felice



## Congregation Kol Ami, a Reform Synagogue, Invites You to Our Annual Open House

**Sunday, May 5th 9:15 – 11:00**

252 Soundview Avenue, White Plains, New York

Come get to know us! Meet our Clergy. Talk with our Religious School Principal. Mingle with members of our Community and learn about our exciting and meaningful programs for social action, adult education, inter-faith families and MORE.

Tour the building and our beautiful new Sanctuary and observe our Religious School in action!

Please join us and learn how you can become a part of our vibrant community!

*Bagels, coffee and free childcare will be provided*

For more information, please contact Janet Hershey, Director of Membership  
949-4717 ext. 115 or [Janethershey@nykolami.org](mailto:Janethershey@nykolami.org)

## Ritual Riches: *the Beauty of Music*

Ever since I was a kid, I always enjoyed music. Although I did not play an instrument, I always loved singing. My father had record albums of all of Beethoven's symphonies which we played on our record player (the young people might ask: "what is a record player?") When we joined the Jewish Community Center (now Kol Ami) in 1967, I started attending Friday night services with my family. In those days, the service was an 8:00 pm Reform service and used the old Union Prayer Book.

As I began to learn the prayers, I was struck by the beauty of the music. At that time, we had a professional quartet, an organ and the beautiful tenor voice of Cantor Emeritus Smolover. I realized very quickly how the

music intensified the beauty of the service. At that time, the Cantor had a teen choir and, shortly after that, he formed the adult volunteer choir. We rehearsed every week and for a few years sang for the second day of Rosh Hashana.

I continue to sing in our Congregational (Volunteer) Choir. We are a committed group and have fun as well. Under the leadership of Cantor Mo, our adult choir continues to flourish. We still meet every week. Our choir enjoys singing for the Congregation, and we get wonderful feedback from the congregation every time we stand on the bima and sing.

I would like to close with the following text

from Yitzhak Buxbaum's book *The Light and Fire of the Baal Shem Tov*, p 150-151:

The Baal ShemTov often led his disciples in song, especially at the Sabbath table. Sometimes he asked them to close their eyes and put their hands on each other's shoulders as they sang, so that they were all connected in a sacred circle. He used to say, "When you put your hand on your brother's shoulder, you physically express your resolve to fulfill the commandment to love your neighbor as yourself."

*Ritual Riches is a monthly column written by members of the Worship Committee. We hope you will find these articles interesting and informative.*

## Planned Giving: *Frequently Asked Questions*

### WHAT IS PLANNED GIVING?

Planned Giving encompasses a variety of giving opportunities. At Congregation Kol Ami we often receive bequests, the simplest form of Planned Giving. Other forms of Planned Giving include charitable trusts, gifts of life insurance, retirement benefits (IRA's, etc.) and non-cash gifts such as real estate or securities. Please consult with your estate and tax specialists or attorneys to determine what form is most appropriate for your situation and family.

### WHAT DOES PLANNED GIVING HAVE TO DO WITH ESTATE PLANNING?

Regardless of income level or age, estate planning is an important step for every family to consider for many reasons. It is also an opportunity to review one's legacy: Planned Giving perpetuates what you believe in, the organizations you value, the ideals you have lived by, your wishes for the future. It provides Tzedakah; peace of mind and personal satisfaction that comes from knowing the legacy you have worked to create will reflect your values, and be distributed according to your wishes.

### HOW IS PLANNED GIVING DIFFERENT FROM THE ANNUAL FUND AND CAPITAL CAMPAIGN GIVING?

The Annual Fund (aka The Kol Nidre Appeal) supports the annual operating budget; the Capital Campaign supports specific projects, such as the recent renovation of the Sanctuary. Planned Giving allows for the establishment of an Endowment Fund, to ensure the future financial stability and security of Congregation Kol Ami and the vibrant Jewish life it represents. A gift made through your estate helps Congregation Kol Ami reach this goal.

### WHY SHOULD I INCLUDE CONGREGATION KOL AMI AS A BENEFICIARY OF MY ESTATE?

Many of you have had a connection with Congregation Kol Ami for decades, and in some cases for two or more generations. When considering Planned Giving, by naming Congregation Kol Ami as a beneficiary of your estate, you are expressing your wish to:

- Have Congregation Kol Ami continue providing Jewish spiritual, educational, cul-

tural and social fulfillment for generations to come;

- Create a legacy during your lifetime that embodies your commitment to Judaism and your ideals for Jewish community and life in the future;
- There may also be tax benefits, which should be discussed with your estate attorney or tax specialists.

### HOW DO I MAKE A BEQUEST?

A few simple sentences in your will and/or trust agreement are all that is needed. For sample wording, please click on the link below (or copy and paste into your browser): <http://nykolami.org/donate-current-page/planned-giving/207-planned-giving/606-planned-giving-how-to-get-started>

### WHO SHOULD I CONTACT FOR MORE INFORMATION OR OTHER QUESTIONS?

Evelyn Klein  
aspencup@aol.com 914-761-7659

Janet Hershey  
janethershey@aol.com 914-949-4717 x115





Congregation Kol Ami  
Invites Families With Young Children  
To Join Us At  
**Our Spring Shabbat Dinner**  
On Friday Evening, May 3, 2013 at 5:30pm

Meet New Friends and Catch Up With Old Friends  
and Help Us Welcome Shabbat As One Community

Shabbat Services Begin at 5:30pm

Dinner Begins at 6:00pm

Immediately following dinner, your children can enjoy the music of Bobby DooWah

Let us know if you'll be coming!  
Please RSVP no later than May 1, 2013

Family Name \_\_\_\_\_ Phone \_\_\_\_\_

Number of Adults \_\_\_\_\_ Number of Children \_\_\_\_\_

Dinner \$50.00 per family or 15.00 per adult and 10.00 per child over 2 years  
Please make your check payable to Kol Ami

## From the Director of the Early Childhood Program

After a very enjoyable April vacation, we didn't miss a step and began preparing our 4's and Pre-K's for our annual *Israeli Dance Festival*. This year we hosted this wonderful annual event and welcomed 5 other Early Childhood Programs from the Westchester area to join us for a rich morning of dance and celebration with our wonderful teacher Shmulik Gov-Ari. From there we jumped right into another wonderful tradition in the ECP, our *Annual Trip to Israel on Yom Ha'atzmaut!*

Our staff and families always look forward to our Yom Ha'atzmaut Celebration with great anticipation and this year was no different. After a most enjoyable "plane ride," the children had an opportunity to put messages into the wall of the Kotel, stomp on grapes in our vineyard, make orange juice, plant trees, milk a cow, take a picture with a camel, learn how things float in the Dead Sea, fish in Eilat, participate on an archaeological dig, make a stained glass window, relax at our very own Dead Sea Spa complete with mud baths, taste the delicious foods of Israel, learn about the animals that live in the desert, and make their own pita! This year, through the fabulous help of Janet Hershey, our Director of Membership and Development, we asked our Helping Hands Committee of volunteers to participate. This group of individuals, which spans the generations at Kol Ami, played an integral part in our morning's success. We could not have had as special a morning without the "helping hands" of Nina Blumenfeld, Roger Seti, Nell Wyler, Jane Friedberg, Betsy McCormack, Paul Davis, Bernice Gale,

Marjorie Bruckman, Judy Gelfand and Janet Hershey. Of course, the morning could not have been possible without the able hands of the ECP Staff and our many parent volunteers, so a special thank you to all who made this morning so special for our 3's, 4's and Pre-K's—THANK YOU!

May begins with our **Shabbat Dinner for Young Families on May 3rd**. Services will begin at 5:30 followed by dinner at 6:00 and music with Bobbi Doowah at 6:30. Hope you'll think about joining us – everyone is invited. For details please refer to our flier on page 6.

Another priceless event we look forward to is our **Annual Art Show and Artists Breakfast** on Wednesday, May 23rd from 9:00-9:45 am. The children work all year on this event and this year our 4's will be showcasing their very own 3-dimensional "Community of Friends." We invite all of our families to join us for breakfast and a special "viewing" of the children's work. This is always a special morning.

On this same morning we will be sponsoring a **Donor Registry Drive** from 9:45am-12:00pm. Please see our flyer on page 8 for details and information—we hope that many of our friends in the ECP and Kol Ami communities will join together in support for this event.

Monday, June 10th will not just be another day at the ECP. This day will be special, as we will have the privilege of hosting our friends from the Children's Early Learning

Center in New Rochelle. These children live at the Coachman Family Shelter in Westchester or come from less fortunate families in our local neighborhoods. We have invited this school's 3 and 4 year olds to join our 3 and 4 year olds for a morning of play, friendship, and of course ice cream!



In an effort to teach the children in our nursery school the concept of Tikun Olam, repairing the world, we have introduced the idea of giving of oneself at a level we know they will understand. Every Shabbat the children are encouraged to bring Tzedakah with the understanding that the monies collected are used to help others. At our annual Share the Love Mitzvah Bake Sale that we traditionally hold during February, all of our classes bake in school and many of our families prepare a few items at home as well. The monies raised from the bake sale along with the Tzedakah that is collected each week is pooled together and used towards purchasing gifts for both the school and the children at the Early Learning Center.

It is our hope here at the Early Childhood Program that our children understand the idea of Tikun Olam, the concept of giving of oneself to help others. After our morning with our new friends, hopefully all of us will grasp the significance of our efforts.

Nan



## Congregation Kol Ami's Summer Session June 24-August 6, 2013

Are dreams of warm summer days beginning to come to mind?

Include the Kol Ami's ECP in your summer plans. We have just the right program for your 2's, 3's and 4's!!

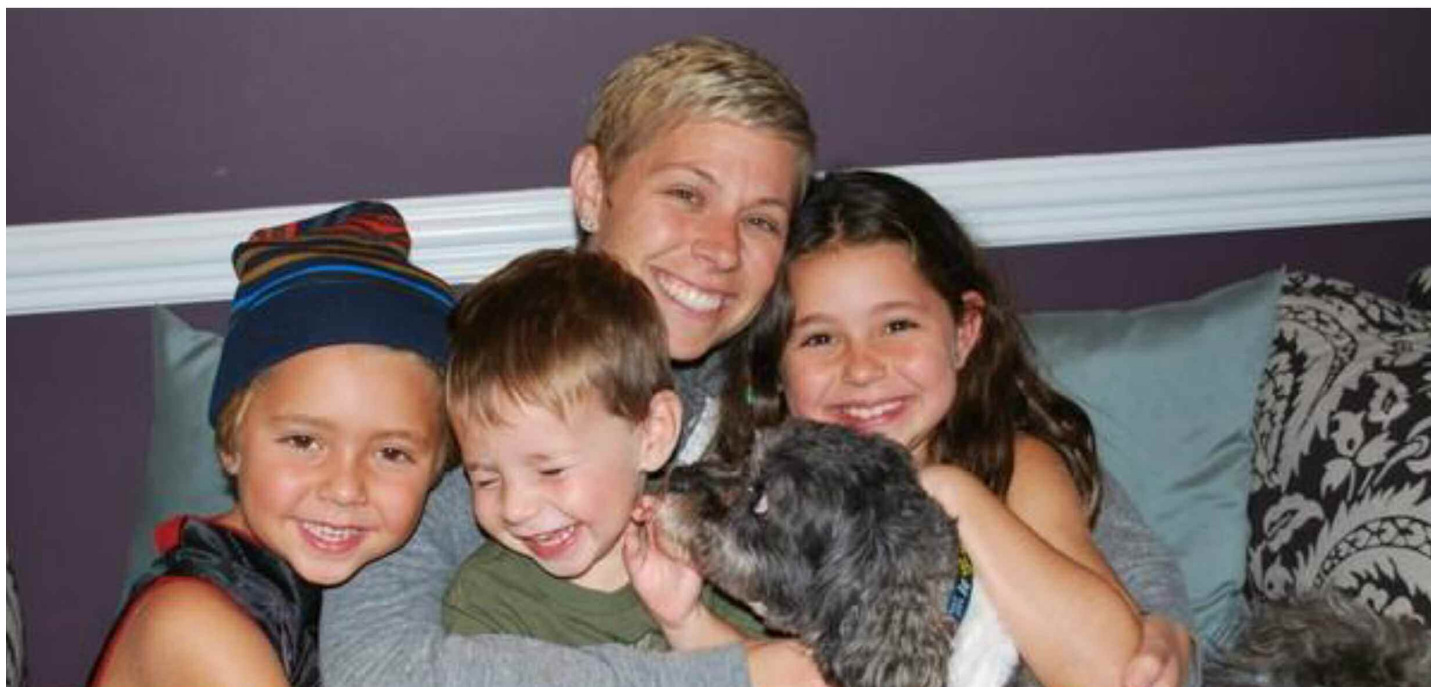
Incoming 2's attend with a parent or caregiver on Mon/Wed or Tues/Thurs

3's choose 3 day or 5 day options

4's attend Monday-Friday

Applications and additional information available by calling Director Nan Blank at 949-4717 x 107

# COULD **YOU** BE SHIRA'S HERO?



Shira, loving wife and mother of three, needs your help. Shira was diagnosed with Hodgkin's Lymphoma and is in need of a blood stem cell transplant. Her best chance of finding a match lies with donors of similar genetic ancestry, particularly Eastern European ancestry. Other patients of many backgrounds are also hoping to find a matching donor and receive a life saving transplant. A SIMPLE CHEEK SWAB IS ALL IT TAKES! Join the registry today and you can save a life tomorrow!

## DONOR REGISTRY DRIVE

Thursday, May 23<sup>rd</sup> from 9:45am-12pm

## Congregation Kol Ami

For more information, please contact Tamara at [thochman@giftoflife.org](mailto:thochman@giftoflife.org)  
or visit [www.giftoflife.org/smilesforshira](http://www.giftoflife.org/smilesforshira)

Eligible donors must be between the ages of 18-60 and in general good health, meet the guidelines and willing to donate to any patient, at any time, worldwide.

Can't make it to a drive? Order a kit online by visiting [www.giftoflife.org/smilesforshira](http://www.giftoflife.org/smilesforshira). Voluntary donations of ANY amount are greatly appreciated and will help offset the \$60 processing of each test kit. Donate online or by check to Gift of Life (address below) or to Smiles 4 Shira LLC, 63 Riverside Avenue, Red Bank, NJ 07701.

*Tax Deductible Contributions, note Shira in reference line*  
Gift of Life Bone Marrow Foundation  
800 Yamato Road, Suite 101  
Boca Raton, FL 33431







## ***Kol Ami Early Childhood Program***

*Warm, Nurturing and Enriching*

***Registration for 2013-2014 Now Open***

*First Friends: A Toddler Program*

*2, 3, 4 and 5-Day 2's • 3, 4, and 5-Day 3's • Morning 4's*

*Full & Half-Day 4's • Extended Day Program for 3's & 4's*

*A Step Ahead! Our Pre-K program for children turning 5 from September through December*

*Call for an appointment and tour today • Nan Blank, Director, at Ext. 107*

## **More Friends for Shabbat!**

In case you haven't heard, Kol Ami's **Shabbat/Havdalah with Friends** evenings have been a resounding success. **Shabbat and Havdalah with Friends** has filled us with food, wine, conversation and laughter. Best of all, these gatherings have been part of our goal to build a community of caring, sharing and love. There are still many dates to choose from and we are always looking for more hosts. Hosts can choose to invite guests for dinner, for coffee and dessert, or for drinks and appetizers.

If you would like to host a meal, or if you have any questions please contact Ilene Miller at [imillerkolami@gmail.com](mailto:imillerkolami@gmail.com) or 914-949-4717 x111.

---

### **2013 DATES**

### **Shabbat with Friends...**

May 10 hosted by Susan and Paul Davis

June 7 hosted by Doris and Marvin Dingott

June 28 hosted by Lisa Borowitz

## From Our Co-Presidents

*It is our pleasure to introduce you to an amazing group of congregants who have been nominated as either a new trustee or a new officer of the Kol Ami Board of Trustees. Their names appear on the slate you received with the mailing for the Annual Meeting, which will be held on Tuesday, May 7th at 8:00 pm (and preceded by a free cocktail reception beginning at 6:30 pm). Please take the opportunity to learn more about our new trustees and officers and to introduce yourself to them when you have the chance. We know firsthand the honor of serving the temple and the community. We look forward to seeing you at the Annual Meeting as you help us welcome our new temple leaders.*

**Mark & Ronnie**

### EXECUTIVE COMMITTEE:

**Hank Rouda (President):** I am truly honored to have been asked to be President of such a warm, caring and wonderful community, where my wife, Jean, and I have been members since 2002. I have served on the Board for the past 5 years and have been a Vice President for the last 3 years. I am the past co-chair of both the Leadership Development Program and the Personnel Committee, and have been a part of the Building Committee, Capital Campaign Committee, Interfaith Families Group, and Worship Committee and am a member of Men's Council. Jean and I live in Hartsdale and have 2 grown children, Jessica and Ben. My day job is General Counsel for the Swedish retailer, H&M. I look forward to working with all of you, the Board and the other Officers as we continue to make Kol Ami such a special place.

My name is **Lori Upbin Abrams (Vice President)** and my family and I live in the Greenacres section of Scarsdale. We moved here from New York City with 2 daughters just in time to make room for a son months later. My husband, Rob, is a physician in New York City specializing in Internal Medicine/Pulmonary Care. Lucy is 21 and currently a junior at Boston University, Annie is a senior at Scarsdale High School and will be attending Brandeis University in September and Charlie, 13, is a seventh grader at Scarsdale Middle School. We

just celebrated Charlie's becoming a Bar Mitzvah on March 16th, as he led the congregation so beautifully in song and prayer.

We joined Congregation Kol Ami in 2001 and my family and I have really been enjoying having a Jewish home and community filled with activities and friends. One of my favorite activities is Friday night services. I just got hooked from the start.

For the past 29 years, I have been fortunate to have built a business in Wardrobe & Prop Styling for the print and commercial industry. I have traveled the world dressing athletes, celebrities, top models and all sorts of people. About 9 years ago I added another hat-event planning. Yet there is still room on my head for the Vice Presidency hat.

I am very excited to have been nominated to the Executive Board as a Vice President. I joined the Board of Trustees 4 years ago and have met so many smart, funny, thoughtful and caring people. I am proud and honored to bring my creativity and skills to an already talented executive board.

**Jonathan Litt (Vice President):** I am looking forward to and honored to be considered as a Vice President for the Kol Ami Board of Trustees. I have been on the Board for the last three years and, with my wife Ellen, we have also been the Co-Chairs of the Annual Fund. In addition, I have been quite involved in the renovation of the social hall, auditorium and atrium in 2006 and most recently our Sanctuary renovation. I trust these past experiences will guide me and help make further contributions to Congregation Kol Ami as a Vice President.

I am a Builder and Real Estate Developer with extensive experience building religious and not-for-profit projects. Ellen and I have two daughters, Hannah and Rayna, and we live in Edgemont. We have been members of Congregation Kol Ami for twelve years.

**Ellen Kurtz (Secretary):** For the past twenty years, my three children: Zach-25, Rachel-23 and Seth Johnson-19, and I have been active members in all aspects of Temple Life. My children grew up at Kol Ami and became active Youth

Group Board Members. Kol Ami has been the center for my family's worship, comfort in times of need, support and guidance for me raising a family as a single mother, and a "retreat" with enduring friendships.

My professional background in Education, Nursing and Business Administration, along with my love for children has created a natural path for many of my Kol Ami interests. Early on, I volunteered as "Props" Drama Mama, Chair of Youth Committee and eventually chaired Adult Education. I assist Nan Blank in ECP as Nurse Advisor. Working on other committees including Dues Review, Annual Fund and chairing Purim baskets all have brought a great sense of satisfaction reaching out to so many congregants in a meaningful way. Despite being totally tone deaf, I have co-chaired the Cantorial Concert Receptions and served on the Cantorial Search Committee that brought Cantor Mo Glazman to the pulpit. I have had the privilege of honoring four dear friends as Co-Chair for Man/Woman of the Year. But my greatest spiritual experience has been becoming a Bat Mitzvah in one of the first Adult Bar/Bat Mitzvah classes (thanks to Rabbi Shira Milgrom's patience and insistence that I could do it.)

I became a Board Member in 2002 and served for eight years. During that time, I also served as Treasurer for Women of Reform Judaism, Sisterhood. I returned to the Board of Trustees representing Sisterhood as President, a position I have held for the past two years. It has been most rewarding over the past several years to help create new programs combining social activities and charitable events. Bridging multi-generations for study, worship, and friendship, I have worked to increase membership and expand Sisterhood's ability to support Temple Programs while providing fun activities.

I will now be joining the Executive Committee of the Board of Trustees as Secretary. I am honored to have the privilege to work with the current leadership of Kol Ami. I cherish all the amazing experiences Kol Ami has provided my family, and I look forward to many more.

**Co-Presidents (continued)****BOARD MEMBERS:**

Hello. I am **Susan Kohn Arovas**. My family and I have been members of Kol Ami since we moved to Scarsdale in 2007. My husband Greg and I have three children: Alex (age 10), Gabriella (age 8), and Talia (age 5). I have been an active volunteer in the Religious School since Alex started in kindergarten and am the current Chair of the Religious School Committee. I also have been involved in several projects for the Early Childhood Program since Gabriella was in the 2's and, along with several other ECP parents, helped to establish the ECP Garden in 2010. Formerly a labor and employment attorney, I am now the Garden Educator for the ECP, where I created and implemented the school's outdoor curriculum. I teach the 4's and 5's students and manage the ECP's garden program. My family and I feel fortunate to be part of the Kol Ami community, which has enriched our lives in countless ways, and I look forward to extending my involvement in the community as a Trustee.

**David Cole:** I was born and raised in Miami, Florida, and moved to New York 18 years ago along with my wife, Dr. Karen Cole. (This makes me unique among Jews as most Jews move the other way around.)

I am currently an attending physician at St. Luke's Roosevelt Hospital in Maternal-Fetal Medicine (high risk obstetrics) in Manhattan, and Karen is a pediatrician in private practice in Scarsdale.

We joined Congregation Kol Ami 7 ½ years ago. During that time, we have watched our twins, Sam and Jared, go through Kol Ami religious school from kindergarten to 7th grade. Sam and Jared recently celebrated their B'nai Mitzvah in April. In addition, we have a 6 year old son, Zachary, who is enrolled in Kol Ami religious school. We reside in Ardsley.

I love Congregation Kol Ami and am excited about joining the Board in July. What originally drew me to Kol Ami was the friendliness of the members and the strong sense of community service of the entire synagogue. These attributes of Kol Ami still exist today. I am very happy

that the Capital Campaign was so successful. During my time on the Board, I would like to see Phase 2 of the Capital Campaign become a reality.

**Elaine Libman:** As a longtime member of Kol Ami I am looking forward to my tenure as a Trustee of the Temple. My husband Hillard (who passed away 8 years ago) and I were married by Rabbi Schwartz as were his two sisters. Our two sons celebrated their Bar Mitzvahs in our Sanctuary and my granddaughter Dylan had her Bat Mitzvah last October. She and her sister Taylor both attend the Religious School. They live in Scarsdale with their parents Jon and Kathleen. I have one more son Jim who lives in the city. With four generations of Libmans as members of Kol Ami we have experienced all the Life Cycles possible. I am proud to be a member of a community that offers so much to their congregants.

My name is **Daniel Lobatto**. Naomi and I live in White Plains with our beautiful daughters Yasmin (7 years young and in Sunday School at Kol Ami) and Zoe (2 years young and in the 2's program at Kol Ami). I was born in Amsterdam, the Netherlands and after living a couple of years in Manhattan, we moved to White Plains and joined Kol Ami in 2009. I still work in the City as an international tax lawyer for PwC where I advise my clients in the financial services industry on the international tax aspects of investments around the world. We found in Kol Ami an amazing community where you can appreciate religion in a positive and respectful environment and we enjoy attending services on Friday evening, the holidays and the events Kol Ami organizes. It forms a very important part in our family life and I look forward joining the Board of Trustees and dedicating time to this great community.

My name is **Betsy McCormack** and I have been a member at Kol Ami for 10 years. I was born and raised in Miami Beach and moved to NYC where I met my husband Tom. I taught deaf children for 6 years at the Lexington School for the Deaf and then worked as a systems analyst for 4 years on Wall Street. Tom and I left NYC with 3 sons and moved to Edgemont, where we added 2 more sons to the mix. In addition to raising

my kids, I currently serve on the Boards of my Neighborhood Association and the PTSA. I have enjoyed my involvement at Kol Ami serving as a co-chair of the Community Organizing Committee and most recently, as a sous chef to Men's Council for their wonderful 2nd Night of Passover Seder. I play mah jongg at the temple every Wednesday, which I absolutely love, and have met so many great women of all ages. I am very excited to become a member of the temple Board and look forward to meeting and working everyone!

From **Steve Salzinger:** I am truly honored to be nominated as a Trustee of Kol Ami. Kol Ami and the clergy have been an integral part of our lives ever since we moved to Westchester from Manhattan. Together with Kol Ami, we have celebrated two Bar Mitzvahs, a baby naming and countless life events. Most recently, my oldest son went with Rabbi Tom and his classmates to Costa Rica; which has been a life-changing event for him. When my wife Maria and I first stepped into the temple almost a decade ago, we were hooked. The energy, warmth and openness have been a cherished part of our Jewish family life. To introduce myself, I run a strategy consulting firm Salzinger & Company where we help large corporations adapt digital into their corporate strategy. As technology becomes more important to communicating with the Kol Ami membership I look forward to contributing my perspective. I also sit on a number of Boards of early stage technology companies such as TownWizard, 3|4 Music and Luminary Digital Media; as well as two public service Boards including the Metropolitan Museum of Art and am a Director of the New York City Technology Development Corporation, appointed by the Comptroller of the City of New York. By way of education, I have an MBA from Harvard University, a BA in English Literature from SUNY Binghamton and attended the Bronx High School of Science. I am truly grateful for the opportunity to serve Kol Ami and supporting the wonderful group of leaders who are so incredibly generous with their time and effort in making Kol Ami such a special place for our family.



#### What is the Retreat? Is it religious?

The Retreat is a weekend that embodies the best of Kol Ami -- a multi-generational, diverse and dynamic community. In one weekend you can enjoy everything from lounging by the lake with a good book, relax with good friends, participate in religious study, and lakeside Shabbat services and enjoy crafts, drama, sports, dancing, campfires and more. The retreat is essentially about community. Come for the weekend or come for the day!

#### Where is the Retreat?

The Retreat is held at the Circle Lodge in Hopewell Junction, NY. It is a beautiful lakeside camp about 45 minutes from White Plains. Adults stay in motel-style accommodations. Children ages 6 and older usually stay in camp bunks with counselors and children their age. Of course, children also have the option of staying with their parents.

#### Will I be comfortable if I come alone?

The Retreat is a great way to meet new people. Each year, many adults come to the Retreat on their own. But, they are never "alone"! We are all together as a community.

#### We have young children – how will they spend their time?

Children have their own extensive list of activities to choose from. A group of experienced counselors (most of whom have grown up at Kol Ami) will provide your children with fun activities and make sure that they are cared for and supervised while you attend the activities that interest you. For younger children, there are special activities at our Children's Center, supervised by experienced staff. Babysitting is also available at night at an additional charge. And, of course, there are lots of things to do together as a family.

#### Is there a specific schedule that I have to follow?

Each day the activities are as diverse as Kol Ami is! While scheduled at specific times, you can come and go as you choose. There is NO pressure to attend any of the activities. Whatever you choose, we guarantee laughter and memories that will last until the next year brings us back together.

#### What if I have other questions?

##### Contact one of us...

Stacey Matusow [sjmatosow@aol.com](mailto:sjmatosow@aol.com)  
 Rachel Eckhaus at [raeck01@gmail.com](mailto:raeck01@gmail.com),  
 Robin Davies-Small [robdav127@hotmail.com](mailto:robdav127@hotmail.com)  
 Adrienne Pollak 686-9736, Jill Staffin at 713-3121,  
 Vicki & Dan Horowitz 834-8250  
 Felice Miller Baritz & Rabbi Shira Milgrom 949-4717

**REGISTRATION AVAILABLE AT [WWW.NYKOLAMI.ORG](http://WWW.NYKOLAMI.ORG)**



# Congregation Kol Ami's ECP

## Welcomes you to our Annual Family Fun Day!

### Everyone in the community is welcome!



### MENU

- ☒ Lange's BBQ
- ☒ Arts & Crafts
- ☒ Games
- ☒ Train Rides
- ☒ Carousel
- ☒ The Ice Cream Man
- ☒ Lots of Family Fun!!



### Rain or Shine

**\$48 per family make your reservation by Friday, June 7<sup>th</sup>**

**(or \$15 per adult and \$10 per child)**

**\$55 per family at the door on June 9<sup>th</sup>**

**Please Respond by June 7<sup>th</sup>, 2013**

**Family Name: \_\_\_\_\_**

**Number of Adults: \_\_\_\_\_ Number of Children: \_\_\_\_\_ Total: \_\_\_\_\_**

**Please send cash or make checks out to Congregation Kol Ami  
and return the bottom part of this page and return to the ECP office.**



# First Friends!

**Toddlers 14-22 months (accompanied by a parent or caregiver)**

Take a look and see what it's all about beginning with a welcome circle, our morning includes:

- Fine motor play with developmentally appropriate puzzles and toys
- Paint exploration
- Craft activity focused on a Jewish holiday or season
- Oatmeal and Water table play, gross motor toys including a pool of balls, slide, teeter totters, and dramatic play in our toddler sized kitchen.
- Bean bag chairs for cuddling and reading a story
- Snack
- Music and Movement
- Besides an ECP teacher, a social worker visits each month to stay and play so that any shared concerns or questions parents may have can be discussed

**This program meets on Tuesdays from 10:00-11:15 and will run in two 10 week Sessions**

**Session 1: October 15 - December 17**

**Session 2: January 28-April 8, 2014**

First Friends provides a wonderful segue to our Early Childhood Program and to our Congregation

Cost per session \$180.00

If you have a toddler and you're looking to make some new friends what are you waiting for?

Maybe the time is right to think about joining us!

\*For more information please call Nan Blank, ECP Director at 949-4717x107



## SAVE THE DATE!

The Westchester Jewish Council  
invites you to join us at the

**2012 Celebrate Israel Parade**  
on Sunday, June 2, 2013

The parade runs from 11 a.m. to 4 p.m.  
along 5th Avenue in Manhattan  
(between 57th and 74th Streets)

For more information, contact Donna at  
donna@wjcouncil.org or 914-328-7001  
visit us at www.wjcouncil.org

(formerly the Westchester Jewish conference)

A proud beneficiary of UJA-Federation of New York

## TEENAGERS THIS Summer CAN CHANGE YOUR WORLD

**LEARN, EXPLORE AND EXPERIENCE OUR  
INNOVATIVE GENERATION 2 GENERATION  
4-WEEK, SUMMER INTERNSHIP.**

Rewards happen all around with our program. You get the opportunity to learn about Jewish culture, tradition and explore your own Jewish identity while gaining invaluable experience for your own future endeavors. Also, our residents get enrichment in their lives just from your participation.

Apply for either one of our two full time summer programs:  
**JULY 1-JULY 26 OR JULY 29-AUGUST 23**  
You need to be 14 years or older. Stipend provided.

Made possible through the generous support of The Everett  
Foundation in memory of Goldie and Elias Brenner.

Call us for more information at 718.581.1404 •  
Or email us at G2G@hebrewhome.org • hebrewhome.org

THE HEBREW HOME  
at Neruda

# **WRJ SISTERHOOD MEMBERSHIP DINNER**

**PLEASE JOIN US FOR OUR ANNUAL CELEBRATION  
WITH GUEST SPEAKER SUSAN L. SOMERS**

**Former Senior Prosecuting Trial Attorney of the United Nations International Criminal  
Tribunal for The Hague, The Netherlands and the former Yugoslavia.**

**"Violence Against Women in War and in Peace"  
Tuesday Evening, May 21st, 7:00 pm  
at Congregation Kol Ami**



**ADMISSION IS FREE FOR SISTERHOOD MEMBERS\*\*\***

**RAFFLE AT THE DOOR FOR FABULOUS GRAND PRIZES!**

**Call Temple Office 914.949.4717 (or email Ilene Miller at [imillerkolami@gmail.com](mailto:imillerkolami@gmail.com))  
to RSVP no later than Friday, May 17th. Sorry, no exceptions.**

**\*\*\*WRJ Sisterhood membership of \$40.00 may be paid at the time of registration. Your  
registration/membership supports many Sisterhood sponsored Temple activities throughout the year.**

## Adult Education

Copies of the Adult Education brochure are available in the office. Please see our brochure or check online at [www.nykolami.org](http://www.nykolami.org) for further information on courses

### Continuing:

#### Mussar Classes

facilitated by Rabbi Pamela Wax:

At Kol Ami in the Schulman Chapel in the Woods, Mondays, 5/13, 6/10 from 12:30pm-2:00 pm (note revised time). This workshop will introduce mussar practice through tikkun mid-dot ("repairing ourselves from the inside out"), so that we can act with greater compassion, kindness, and love in our homes, friendships and work. Contact Rabbi Wax at [pwax@wjcs.com](mailto:pwax@wjcs.com) to register or go to <http://asoft8125.acrisoft.com/wjcs/clientuploads/HC-2013.pdf> for a full listing of the Healing Center programs (including an evening Mussar group).  
Cost: Suggested donation: \$72; \$54 for Kol Ami members

#### Jewish Mindfulness Meditation

Led by Ruth Rosenblum, LCSW,  
The WJCS Partners-in-Caring clinician  
Thursday mornings, 9:15 - 10:30 am  
Jewish contemplative practices for clearing the mind, softening the heart and opening to the One. All Welcome. No meditation experience necessary.  
Schulman Chapel in the Woods

#### Parenting Workshops

with Susan Davis, LCSW:

#### Sunday Parenting Group

Raising resilient, self-reliant children—  
A morning discussion group focusing on a variety of parenting issues and stresses.  
5/5  
in the Chapel  
9:15 – 10:45 am

#### Adolescent Parenting Workshops

Discussion of a range of parenting issues related to adolescence, including physical and emotional development, trust and control issues, and staying connected in the midst of the turmoil.  
First & third Thursdays of the month  
First Thursday: 9:45 – 11:45 am  
Third Thursday: 12:00 noon – 2:00 pm

#### Grandparenting Workshops

Exploring intergenerational experience and Jewish wisdom as we share the challenges and opportunities of grandparenting.  
first Monday of the month  
9:15 - 10:45 am

#### Weekly Torah Study

Every Friday morning 10:00 – 11:30 am  
Led by Kol Ami members

#### Kol Ami Reads/Book Club

Meets the first Wednesday of every month throughout the year. 9:15 am  
Meets in Room 20. For more information call Doris Dingott at 289-0869

#### Mah Jongg and Bridge

Open To All: Experienced and Novice  
Wednesdays 11:30 am. Kol Ami Atrium  
Email Wendy Roos to be added to the Mah Jongg email distribution  
[wendyroos1@aol.com](mailto:wendyroos1@aol.com)

#### Wisdom of the Sages

##### Lunch and Learn at Kol Ami

Bring your lunch and learn with Rabbi Tom. All are welcome. Lively discussions of the world and our lives based on some of the provocative and fascinating texts of Jewish learning.  
Tuesdays, 12:00 noon

#### Israeli Folk Dance

with Shmulik Gou-Ari\*

Connect with the heart and soul of the Jewish story through dance.  
Wednesdays  
7:30 – 8:15 pm Beginners  
8:15 – 10:00 pm Open Dance  
Individual sessions -  
\$10 members, \$13 non-members

#### Current Events

with Beth and Gene Kava

Each session will provide the participants an opportunity to examine a current issue of the day in depth.  
Mondays, 11:00 am - 12:30 pm in Room 20  
May 6 & 20

#### Mitzvah Knitz

Together we will knit baby afghans, caps for Israeli soldiers, and more.  
Third Thursday of the month  
12:00 noon – 2:00 pm

#### Women's Roundtable Breakfast

Join Kol Ami's remarkable, multi-generational women for learning & friendship  
With Rabbi Shira Milgrom  
Wednesdays, 7:45-9:00 am  
Final Breakfast 5/1

#### Hebrew Classes for Adults

Pending sufficient enrollment

\$150 per semester (scholarships available)

\$180 per semester for non-members

#### Sunday Mornings

with Emily Fields

Last Day: Sun. 5/5

#### Advanced Beginners

Aleph Isn't Tough

10:00 – 11:00 am

#### Intermediate

11:15 am – 12:15 pm

#### Sunday Mornings

with Alice Seidman

#### Intermediate/Advanced

Conversational Hebrew, grammar, vocabulary, reading, and translating current Israeli publications. An informal learning environment.  
9:30 – 10:30 am  
(Contact Alice Seidman at 953-8455 for further information)



## Library News

There appear to be books missing from our second floor library. An Amnesty is extended to people with outstanding, overdue books. Just return the books to the main office (not the library) so that they can be re-shelved for others to use.

Those of you wanting to take books out of the library, please fill out the card in the back of the book with name, date and phone number and place in the box on top of the card catalogue. Thanks so much.

## Kol Ami Reads Book Club

### *Far from the Madding Crowd*

by Thomas Hardy  
May 1, 2013

### *In the Garden of the Beasts*

by Eric Larsen  
Discussion Leader: Devorah Banks  
June 5, 2013

### *Love and Shame and Love*

by Peter Orner  
July 3, 2013

All meetings are on the first Wednesday of the month at 9:15am in Room 20.  
*Come whether you've read the book or not; the discussion is always lively.*

For further information,  
contact Doris Dingott, 289-0869,  
DLDingott@gmail.com or  
Elaine Cohen, 725-0248,  
elwilco@verizon.net

## MITZVAH KNITZ

**We will be meeting on  
Thursday  
May 16, 2013  
from noon to 2:00 pm.**

Join us.  
Knitters of all skill levels  
are welcome.  
For further information,  
call Elaine Cohen,  
725-0248 or  
elwilco@verizon.net



## Mark Your Calendar – Kol Ami Blood Drive

**Tuesday, May 28, 2013**

**4:00 – 9:30 pm at Bet Am Shalom**

Please make sure there will be blood available when someone needs it. YOU can save lives. Students returning from College are welcome. Give the GIFT OF LIFE. Blood donors must be at least 17 years old (or 16 with written parental/guardian permission) and weigh 110 pounds. People over 75 can continue to donate blood if they meet all donor criteria and present a physician's letter allowing them to donate. There are, however, some medical conditions that can keep someone from giving blood. There are also some restrictions based on past travel. If you have specific questions about your donor eligibility, call 1-800-688-0900 or log on to [www.nybloodcenter.org](http://www.nybloodcenter.org) and click on Donate Blood. Chairman David Klein

*"For the life of all flesh—its blood is its life." Leviticus 17:14*

*Whoever saves a life, as if saves an entire world." Mishna Sanhedrin 4:5*



# Kol Ami Cares

## *Opportunities for Volunteering*

Kol Ami Cares is a group of committees that help others through mitzvot.

The following are some of the sub-committees with their missions and the name of someone to contact if you are interested in helping:

### **ELM STREET GARDEN**

Jodi Klein – jodi.klein@gmail.com

Members of Kol Ami, Bet Am Shalom and parents and children from the Elm Street Youth Center of Yonkers tend the Elm Street Center garden and share a special lunch to celebrate. Harvest and gardening activities take place throughout early Fall.

### **KOL AMI SINGERS**

Murray Shapiro – 946-7789 ettl18@optonline.net

Join us as we sing songs accompanied by Paul Schwarz. Bring a little sunshine to nursing home residents and make a difference in their lives. No rehearsals needed.

### **COOKING FOR THE HOMELESS** on Sundays and Mondays

Nancy Marcus - 725-7231 (Sunday) and Laura Green- 949-6113 (Monday)

Kol Ami Cooks prepares dinner for the residents, approximately 50 men, of the Open Arms men's shelter in White Plains. Each time we meet, we make a main dish and sides as our goal is to provide a simple, hearty and nutritious meal. We usually finish with the prep, cooking and cleanup in about 90 minutes. Sunday's from 11-12:30. Monday's from 12-1:30 pm.

### **HELPING OLDER CONGREGANTS IN NEED**

Leslie Wiesen 686-9516 – LSW20@earthlink.net

If you are interested in working with a program that focuses on helping local Senior Citizens in our congregation, there are many established programs in the White Plains community.

### **BIKUR CHOLIM – Helping the sick**

Ginny Ruder – 722-1387 ginnyruder@gmail.com

Congregation Kol Ami, along with the Volunteer Office at White Plains Hospital Center, has for many years brought in and trained congregants for the WPHC Lay Chaplain Program. You are asked to commit to visiting Jewish patients in the hospital at least once a week for a two hour period. The program is organized by the Pastoral Care Office, managed by Bro. Rick Lorino.

### **VISTING THE HOMEBOUND**

Betsy McCormack 725-7871 betsyrmc@aol.com

After people are home from the hospital, re-hab or simply living on their own we have a committee that focuses on staying in touch with those who need a connection to the world outside their four walls. We offer phone conversation, or face to face time.

### **MAKING MEALS FOR THOSE IN THE HOSPITAL OR RECOVERING**

Ginny Ruder 722-1387 ginnyruder@gmail.com

Kol Ami members offer to provide a dinner to those families with a member in the hospital or single congregants recently out of rehab and unable to make a meal. We use the online Lotsahelpinghands.com system to register dates when meals are needed and to sign up as a provider. We typically provide one or two meals for a short recovery period so the family member can get back on their feet. Meals do not have to be home made.

### **SHARING RIDES TO KOL AMI EVENTS**

Leslie Wiesen – 686-9516 – LSW20@earthlink.net

There are members of the Kol Ami community who are unable to drive to events at the Temple. If you are able to share a ride we post through Lotsahelpinghands.com the notices of need and you can sign up to share for a specific time.

#### **KOL AMI SINGERS**

It's a mitzvah to bring an hour of music, companionship and smiles to those in need.

**Wed., 5/8 at 2:30pm**

**Sarah Neuman Nursing Center, Mamaroneck**

Questions? Please contact Murray Shapiro, 946-7789

#### **COOKING FOR THE HOMELESS**

Meets in the Kol Ami Kitchen

For Sunday Information: Nancy Marcus - 725-7231

For Monday Information: Laura Green - 949-6113

Sundays at 11:00 am: 5/5, 6/2 Mondays at noon: 5/6, 6/3.

SUNDAY	MONDAY	TUESDAY	WEDNESDAY	THURSDAY	FRIDAY	SATURDAY
			<b>1</b> <b>RELIGIOUS SCHOOL</b> 7:30am Women's Roundtable Breakfast 9:00am Kol Ami Reads 11:30am Mah Jongg/Bridge 6:00pm Or Chadash Choir 6:30pm Advanced Beginner Hebrew 7:30pm pm Israeli Folk Dance	<b>2</b> 9:15am Jewish Mindfulness Meditation 9:45am Adolescent Parenting Workshop 7:45pm Congregation Choir	<b>3</b> <b>ECP SHABBAT DINNER</b> 10:00 am Torah Study <b>5:30 pm SHABBAT IN THE WOODS</b> in Gallery <b>6:15 pm SHABBAT EVENING SERVICE</b> in Sanctuary honoring Rabbinic Intern Rachel Maimin	<b>4</b> <b>SPIRITUAL LIFT</b> in Chapel 9:00 am Coffee & Community 9:30 am Study <b>11:00 am SERVICE</b> <b>10:30 am SHABBAT MORNING SERVICE:</b> Bar Mitzvah of Max Karl in Sanctuary <b>5:30 pm SHABBAT AFTERNOON LIFT:</b> Bar Mitzvah of Eric Kopczynski in Sanctuary <b>7:30 pm SPRING FUNDRAISER</b>
<b>5</b> <b>RELIGIOUS SCHOOL</b> 9:00 am Prospective Members Open House 9:15 am Sunday Parenting Group 9:30 am Intermediate/Advanced Hebrew 10:00 am Advanced Beginners Hebrew 11:00 am Cooking for the Homeless 11:15 am Intermediate Hebrew	<b>6</b> 9:15 am Grandparenting Class 11:00 am Current Events Class 12:00 pm Cooking for the Homeless	<b>7</b> 12:00 pm Wisdom of the Sages <b>6:30 pm COCKTAIL RECEPTION FOR R. FARLEY &amp; M. SEIDEN</b> 8:00 pm Annual Meeting of the Congregation	<b>8</b> <b>LAST DAY OF WEDNESDAY RELIGIOUS SCHOOL</b> 11:30am Mah Jongg/Bridge 6:00pm Or Chadash Choir 6:30pm Advanced Beginner Hebrew 7:30pm pm Israeli Folk Dance	<b>9</b> 9:15 am Jewish Mindfulness Class 7:00 pm Confirmation Dinner	<b>10</b> 10:00 am Torah Study <b>5:30 pm SHABBAT IN THE WOODS</b> in Gallery <b>6:15 pm SHABBAT EVENING SERVICE</b> in Sanctuary	<b>11</b> <b>SPIRITUAL LIFT</b> in Chapel 9:00 am Coffee & Community 9:30 am Study <b>11:00 am SERVICE</b> <b>5:30 pm SHABBAT AFTERNOON SERVICE:</b> Bat Mitzvah of Sydney Barest in Sanctuary
<b>12</b> <b>RELIGIOUS SCHOOL</b> 9:30 am Intermediate/Advanced Hebrew 10:00 am Advanced Beginners Hebrew 11:15 am Intermediate Hebrew	<b>13</b> 12:30 pm Mussar Group	<b>14</b> <b>EREV SHAVUOT/ CONFIRMATION</b> 11:30 am Transitions Group 12:00 pm Wisdom of the Sages 7:00 pm Confirmation Service in Sanctuary	<b>15</b> <b>ECP &amp; OFFICE CLOSED RELIGIOUS SCHOOL CLOSED</b> <b>9:00 am SHAVUOT &amp; YIZKOR SERVICES</b> in Chapel	<b>16</b> <b>ECP CLOSED</b> 9:15 am Jewish Mindfulness Group 12:00 pm Mitzvah Knitz	<b>17</b> 10:00 am Torah Study <b>5:30 pm SHABBAT IN THE WOODS</b> in Gallery <b>6:15 pm SHABBAT EVENING SERVICE</b> in Sanctuary	<b>18</b> <b>SPIRITUAL LIFT</b> in Chapel 9:00 am Coffee & Community 9:30 am Study <b>11:00 am SERVICE</b> <b>10:30 am SHABBAT MORNING SERVICE:</b> B'not Mitzvah of Emily & Madeline Brew in Sanctuary <b>5:30 pm SHABBAT AFTERNOON SERVICE:</b> Bat Mitzvah of Audrey Shaev in Sanctuary
<b>19</b> <b>LAST DAY OF RELIGIOUS SCHOOL ZIMRIYAH</b> 9:30 am Intermediate/Advanced Hebrew 10:00 am Advanced Beginners Hebrew 11:15 am Intermediate Hebrew	<b>20</b> 11:00 am Current Events Class 7:30 pm KABRO Meeting	<b>21</b> 12:00 pm Wisdom of the Sages Class 7:00 pm VRJ Membership Dinner	<b>22</b> 11:30 am Mah Jongg/Bridge 7:30 pm Israeli Dancing	<b>23</b> <b>9:00 am ECP ART SHOW AND DONOR REGISTRY DRIVE</b> 9:15 am Jewish Mindfulness Class 7:00 pm Worship Committee 8:00 pm Congregational Choir	<b>24</b> <b>RETREAT BEGINS</b> 10:00 am Torah Study <b>5:30 pm SHABBAT IN THE WOODS</b> in Gallery <b>6:15 pm SHABBAT EVENING SERVICE</b> in Sanctuary	<b>25</b> <b>RETREAT CONTINUES SPIRITUAL LIFT</b> in Chapel 9:00 am Coffee & Community 9:30 am Study <b>11:00 am SERVICE</b> <b>5:30 pm SHABBAT AFTERNOON SERVICE:</b> Bat Mitzvah of Emma Ziemann in Sanctuary
<b>26</b> <b>RETREAT ENDS</b>	<b>27</b> <b>MEMORIAL DAY OFFICE CLOSED ECP CLOSED</b>	<b>28</b> 11:30 am Transitions Class 12:00 pm Wisdom of the Sages 4:00-9:30 pm Blood Drive at Bet Am Shaom	<b>29</b> 11:30 am Mah Jongg/Bridge 7:30 pm Israeli Folk Dancing	<b>30</b> 9:15 am Jewish Mindfulness Class 7:45 pm Congregational Choir	<b>31</b> 10:00 am Torah Study <b>5:30 pm SHABBAT IN THE WOODS</b> in Gallery <b>6:15 pm SHABBAT EVENING SERVICE</b> in Sanctuary	<b>June 1</b> <b>SPIRITUAL LIFT</b> in Chapel 9:00 am Coffee & Community 9:30 am Study <b>11:00 am SERVICE</b> <b>10:30 am SHABBAT MORNING SERVICE:</b> Bat Mitzvah of Samantha Weiner in Sanctuary

**The one name  
to remember...**



**BALLARD-DURAND**  
FUNERAL & CREMATION SERVICES

[www.BallardDurand.com](http://www.BallardDurand.com)

**When it's time  
to remember.**

White Plains  
**914-949-0566**

Elmsford  
**914-592-6300**



Find us on Facebook

252 Soundview Avenue, White Plains, NY 10606

**June  
Connection Deadline**

**May 17, 2013**

**Congregation Kol Ami**  
A Reform Synagogue  
(914) 949-4717

*A Member of the  
Union for Reform Judaism*

**Rabbis**

**Shira Milgrom**  
328-4549

**Tom Weiner**  
684-6991

<b>Cantor:</b>	<b>Mo Glazman</b>
<b>Exec. Director:</b>	<b>Jane S. Friedberg</b>
<b>Religious School</b>	
<b>Principal:</b>	<b>Felice Miller Baritz</b>
<b>ECP Director:</b>	<b>Nan Blank</b>
<b>Program Manager:</b>	<b>Ilene Miller</b>
<b>Director of Membership</b>	
<b>&amp; Development</b>	<b>Janet H. Hershey</b>
<b>Co-Presidents:</b>	<b>Ronnie Cohn Farley</b>
	<b>Mark Seiden</b>

<b>Rabbis</b>	<b>Lawrence W. Schwartz*</b>
<b>Emeriti:</b>	<b>Maurice Davis*</b>
	<b>Mark L. Winer</b>
<b>Cantor Emeritus:</b>	<b>Raymond Smolover</b>

\*of blessed memory



CONGREGATION  
**KOL AMI**

252 Soundview Avenue, White Plains, NY 10606 / 914-949-4717 Fax 914-946-8143

Non Profit  
U.S. Postage  
PAID  
White Plains, N.Y.  
Permit No. 492